

Notice to La Riveraine bicycle path users

La Riveraine bicycle path detour

Montreal, October 14, 2015 – In connection with the construction of the new Champlain Bridge, Signature on the Saint Lawrence advises users that traffic on La Riveraine bicycle path will be diverted beginning on October 19, 2015. This detour will be maintained throughout the entire construction period, until 2019.

The work in October is aimed at building a jetty from the South Shore in Brossard and extending 425 metres into the St. Lawrence River. The jetty will be used as a work area during the construction phase. The rockfill needed to build the jetty will be delivered by truck on a frequent and ongoing basis. Vehicles entering and exiting the construction site would pose a hazard to bike path users.

There will also be trucking activities and heavy machinery traffic during construction of the eastern approach to the new Champlain Bridge as the site also includes a storage area, a steel assembly platform and various construction areas. These activities involve crane-assisted lifting and handling of steel beams, as well as on-site transportation of heavy parts.

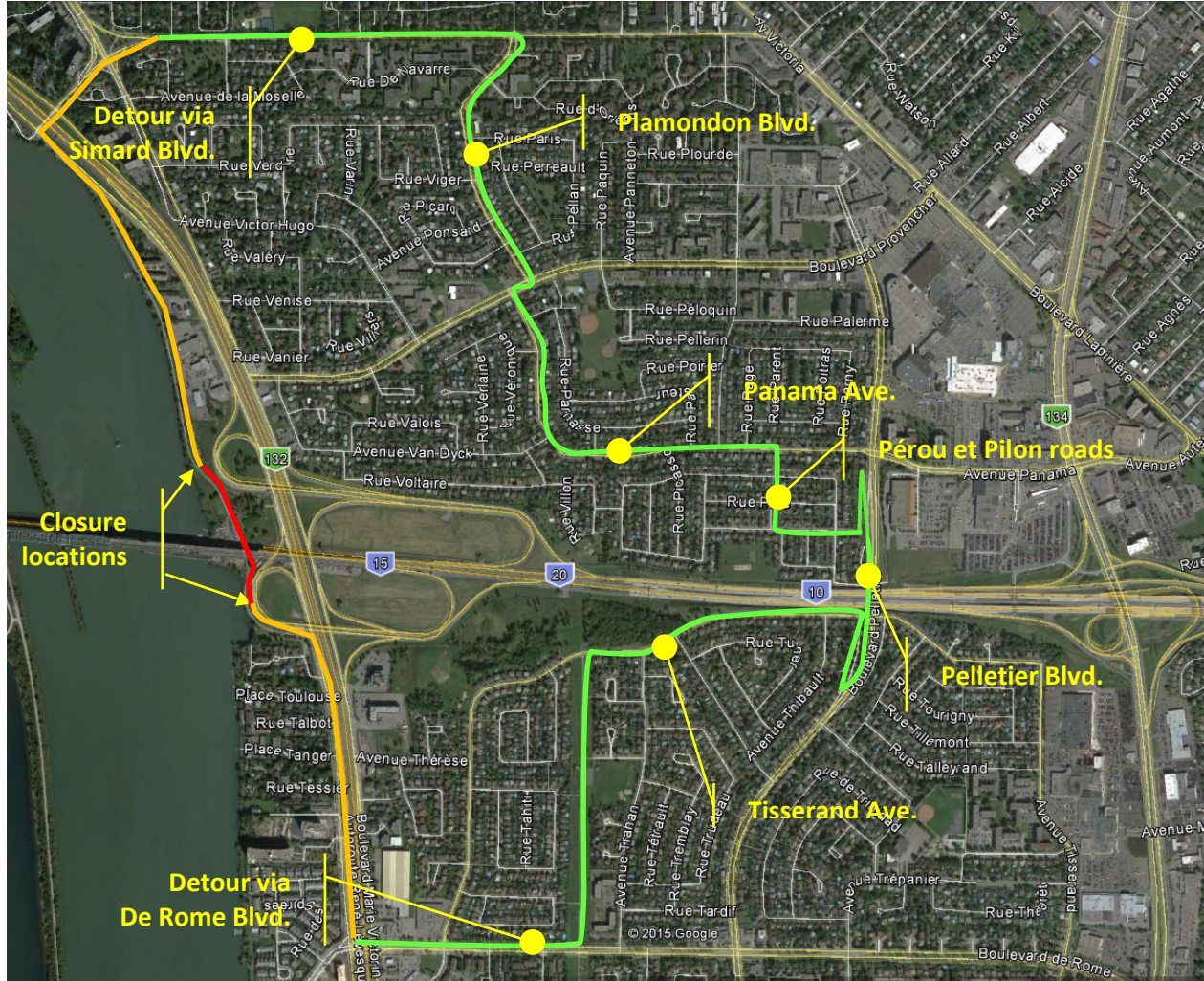
To ensure the safety of pedestrians and cyclists, La Riveraine bike path between de Rome and Simard boulevards will be diverted over 6.7 km.

Signage

To ensure users' safety, the bike path will be closed off and signs will clearly indicate the exact closing points in the vicinity of the bridge construction site. Signature on the Saint Lawrence has planned this detour in collaboration with the Cities of Brossard and Saint-Lambert and Vélo-Québec. Signs will be posted at the beginning of the bike path and other strategic locations, advising cyclists of the detour due to bridge construction, including as well indications on the detour route, contact information, and reference to our web site www.newchamplain.ca

Location of bike path closures and detour route

The map below shows the exact locations where La Riveraine bike path will be closed to traffic, along with the detour route.



About the Project

The New Champlain Bridge Corridor Project is one of the largest infrastructure projects in North America. It also includes a new bridge leading to Île-des-Soeurs, as well as upgrading of the federal sections of Highway 15 in Montreal and Highway 10 in Brossard. The project is being carried out as a public-private partnership (P3) between the Government of Canada and the Signature on the Saint Lawrence. The project is scheduled to be completed over four and a half years.

Contact us:

www.newchamplain.ca

Twitter @nouv_champlain

Tel: 514-876-1020

info@SSLC.ca